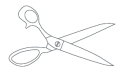


# Layplans

This layplan is just for dressmaking sizes 6-16 using 140cm wide fabric.



THE FOLD LINE

PATTERN SHOP &  
SEWING COMMUNITY

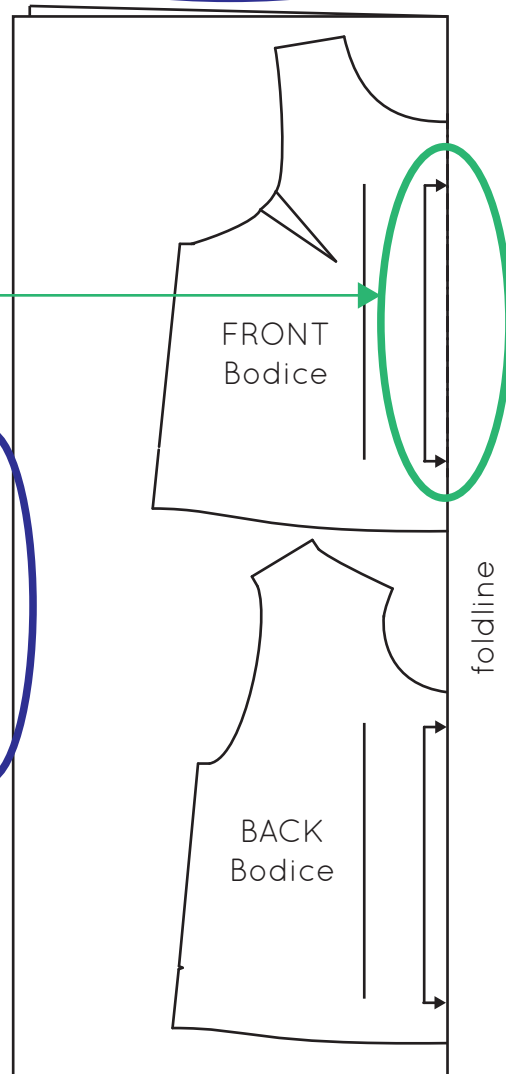
This layplan is for all dressmaking sizes using 115cm wide fabric.

**115cm wide fabric**  
Sizes 6 - 24

This is a common way of marking a pattern to indicate that this edge of the pattern piece should be placed on the fold.

Selvedge edge of the fabric

selvedges

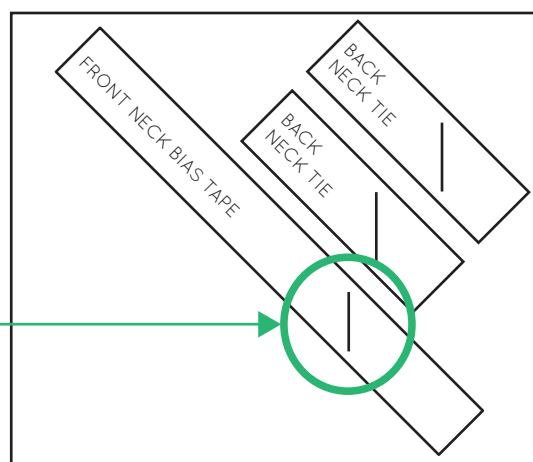


The fabric piece is laid flat, whether it is 115cm or 140cm wide and the lay plans are for all dressmaking sizes.

**For all sizes**  
Bias tape

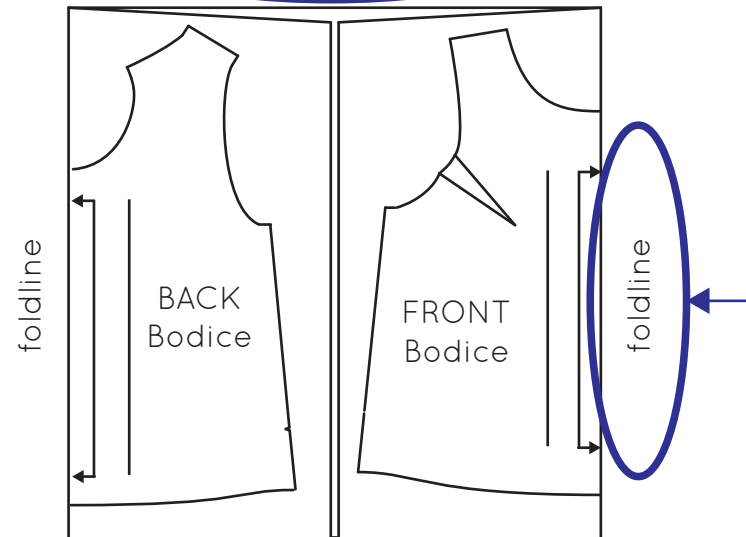
These pattern pieces are being cut on the bias because the grainline, although parallel to the selvedge, is at a 45 degree angle to the straight edges of these pattern pieces.

selvedge



selvedge

**140cm wide fabric**  
Sizes 6 - 16

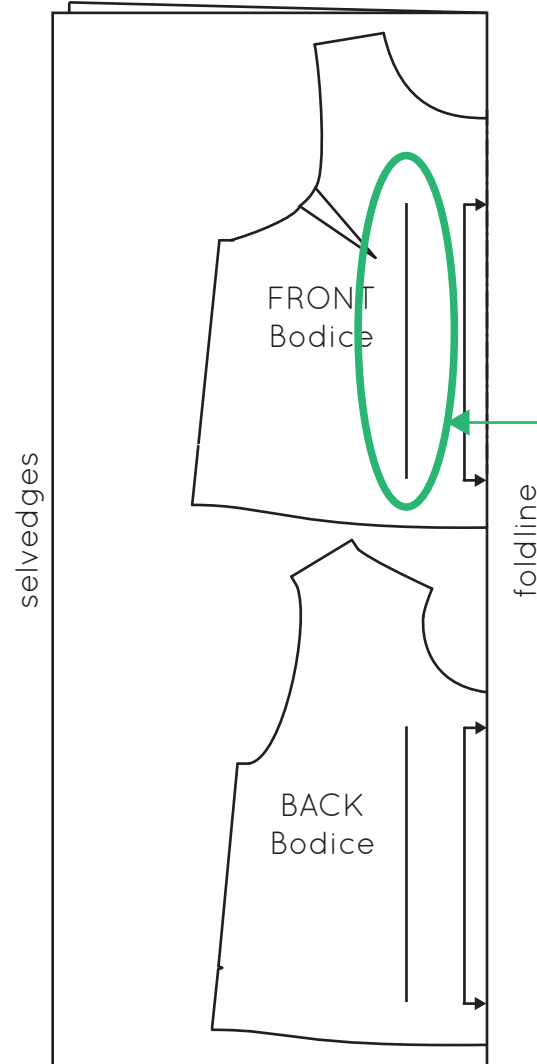


This is the folded edge of the fabric

foldline

**140cm wide fabric**  
Sizes 18 - 24

This layplan is just for dressmaking sizes 18-24 using 140cm wide fabric.



This is the grainline and it must always be parallel to the selvedge.

selvedges

foldline